

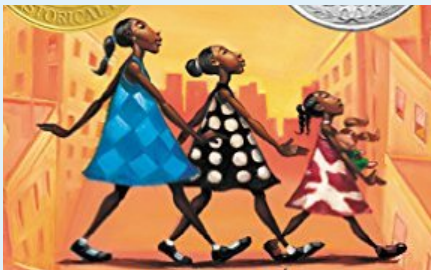
DR. MEGHANN  
MEEUSEN

ENG 3830:  
LITERATURE  
FOR THE  
INTERMEDIATE  
READER



Spring 2017

## Course Objectives



### Contact Info

meghann.meeusen@  
wmich.edu

### Office Hours

921 Sprau Tower  
Tuesday/Thursday  
12:30pm-3:30pm

I am also available  
outside of these times  
by appointment.

**Identify Ideological and Social Messages:** Students will identify the social, cultural, and ideological messages presented in children's texts, noting how books and media reflect and inform belief systems in contemporary society.

**Explore Cultural Context and Conceptions of Childhood:** Students will examine the social and historical context that defines and influences texts for children, considering how these texts both reflect and shape notions of childhood.

**Read and Compose Literary Discourse:** Students will investigate how scholars and teachers think, write, and speak about literary texts, defining and producing examples of literary discourse in its various forms.

**Practice Analysis and Literary Interpretation:** Students will practice literary analysis and close reading, utilizing a variety of critical approaches to develop critical thinking as well as a language with which to share interpretations of literature.

**Develop Familiarity with Theory-Driven Terminology:** Students will build knowledge about foundational topics, concepts, and approaches to children's texts, developing language built on contemporary theoretical perspectives.



93%-100% A  
distinctive, exceptional,  
outstanding work

88-92% BA  
83%-87% B  
strong, thoughtful work

78-82% CB  
73%-77% C  
average, complete work

68-72% DC  
62%-67% D  
problematic, sloppy work

## Required Books and Materials

Gail Carson Levine's *Ella Enchanted*  
Neil Gaiman's *Coraline*  
Rita Williams-Garcia's *One Crazy Summer*  
Thanhha Lai's *Inside Out & Back Again*

Rukhsana Khan's *Wanting Mor*  
Adam Rex's *True Meaning of Smekday*  
Shaun Tan's *The Arrival*  
Nathan Hale's *Hazardous Tales*

**Copy Card & Printing:** Students will also need to purchase a **\$5 Copy Card** (available at the WMU bookstore) to cover the cost of printed in-class materials. For some assignments, students will need print copies for submission. If you would like something printed/copied by Dr. Meeusen (including assignments and critical articles, etc), please email a digital version at least 48 hours before you need it.

**Book Requirements:** Students will also read several self-selected books/articles for the individual analysis and other assignments. Please bring a paper or digital copy of reading to class each day during the week it is assigned. Listening to books via audio or reading the reserve copy at the library is also encouraged, but a hard copy is necessary for class (to look up quotes, etc). This is an important part of active class participation and can also affect in-class writing grades.





### Daily Participation

Attendance/Quizzes/  
Exit Tickets: 200 points

### Knowledge Sharing

Critical Article Handout:  
100 points

Midterm Conference  
Presentation: 100 points

Knowledge Fair "Exam"  
Presentation: 100 points

### Individual Writing & Research

Writing Development  
(Four Essays): 300 points

Individual Project:  
200 points

### ATTENDANCE / QUIZZES / EXITS (20% of final grade):

Students will have multiple opportunities throughout the semester to practice analysis through writing activities completed during class. Please see additional handout for description of typical in-class writing assignments, including exit tickets and quizzes. *Note: Students can only earn credit for these assignments when present in class.*

**WRITING DEVELOPMENT (30% of final grade):** Students will practice four instances of formal analytical writing, which includes a clear thesis statement supported by evidence. Students will employ reflective techniques to improve their writing proficiency throughout the term, and thus, the first two of these homework assignments are worth 50 points, while the second two are worth 100 points.

### CRITICAL ARTICLE HANDOUT (10% of final grade):

Students will sign up for one critical article related to a certain week's reading and create a single page handout summarizing the main thesis and argument the writer makes, copying this handout to share with the rest of the class.

### MINI MIDTERM CONFERENCE PRESENTATION

**(10% of final grade):** Students will compose a short piece of formal analytical writing that explains a specific literary interpretation, focusing on connection-making, trends/patterns, critical theory, social messages, etc and present it as a mini conference presentation (<5 minutes).

### INDIVIDUAL FINAL PROJECT (20% of final grade):

Scholars and teachers who study literature write in a variety of ways. The final project asks students to choose one of these approaches, purposefully creating a project that demonstrates understanding of the unique ways individuals think about literary texts. This project also includes a rationale: a written defense that explains how the project meets objectives.

### KNOWLEDGE FAIR PRESENTATION (10% of final grade):

Rather than a final exam, students will demonstrate their cumulative analytical skills by presenting either 1) a more in-depth study of a key term or 2) a set of book recommendations related to a class topic or theme (more information to follow). Final presentations should be 2-3 minutes and include a single PowerPoint slide, a handout distributed to the class, and an interactive component with reflective analysis.



## Procedures & Resources

Students are responsible for making themselves aware of and understanding the University policies and procedures that pertain to Academic Honesty. These policies include cheating, fabrication, falsification and forgery, multiple submission, plagiarism, complicity and computer misuse. The academic policies addressing Student Rights and Responsibilities can be found in the Undergraduate Catalog at

<http://catalog.wmich.edu/content.php?catoid=24&navoid=974>.

If there is reason to believe you have been involved in academic dishonesty, you will face academic penalty based on the infraction's severity, which can include a failing grade and/or referral the Office of Student Conduct. Please consult with me if you are uncertain about an issue of academic honesty prior to the submission of an assignment.

In addition, please make yourself familiar with the following campus services and policies, and don't hesitate to let me know if you have any questions:

- Disability Services for Students  
[www.wmich.edu/disabilityservices](http://www.wmich.edu/disabilityservices)
- Division of Student Affairs / Diversity Questions  
[www.wmich.edu/students/diversity](http://www.wmich.edu/students/diversity)
- Sexual and Gender-Based Harassment and Violence, Intimate Partner Violence, and Stalking Policy [www.wmich.edu/sexualmisconduct](http://www.wmich.edu/sexualmisconduct)
- Religious Observance  
[http://www.wmich.edu/facultysenate/downloads/MOA0702\\_religious\\_observances\\_final.pdf](http://www.wmich.edu/facultysenate/downloads/MOA0702_religious_observances_final.pdf)
- Office of Student Conduct [www.wmich.edu/conduct](http://www.wmich.edu/conduct)
- Civility Statement  
[http://wmich.edu/sites/default/files/attachments/u370/2016/Civility%20Stmt.7-27-16\\_0.pdf](http://wmich.edu/sites/default/files/attachments/u370/2016/Civility%20Stmt.7-27-16_0.pdf)

If you are a student with a disability (e.g. physical, learning, psychiatric, vision, hearing, etc.) and think that you might need special assistance or a special accommodation in this class or any other class, please call Disability Services at (269) 387-2116 or visit them at Woodlawn Place at 2210 Wilbur Ave. Please don't hesitate to speak with me about ways to meet your needs in this capacity.

Additionally, I am more than happy to discuss ways that this course could better meet any student's needs, and I encourage anyone who is struggling for any reason to contact me. I will do my very best to fairly accommodate all students who express concern in a respectful way.

Dr. Meeusen's private phone, for emergencies only: 586-651-0289



## Attendance & Late Work

As active participants in an academic community, students must attend class every day. As part of the attendance policy, **attendance/in-class writing points (including quizzes) can ONLY be earned if a student is present in class.**

If a student must be absent, he/she is responsible for all missed content, including assignment due dates.

Please demonstrate professionalism by arriving to class on time and waiting until class concludes completely before packing up belongings in preparation for departure.

I do not accept late work. Although I reserve the right to make exceptions to this policy, this is only possible after a discussion with me. If you foresee a problem completing an assignment on time, please contact me at least 48 hours in advance, at which time I am far more open to making arrangements.